



## INTELLIHEAT COMPATIBLE HANDPIECES

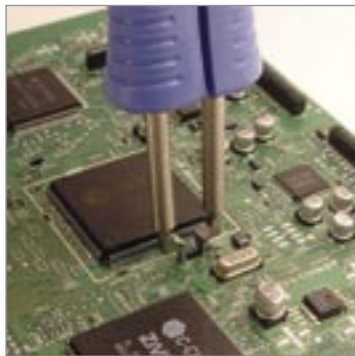
TIP-HEATER CARTRIDGE HANDPIECES PERFECT FOR LEAD FREE



### TD-100 THERMO-DRIVE® SOLDERING IRON

The **TD-100 Thermo-Drive®** Soldering Iron is the only iron crafted by a team of surgical instrument engineers and is uniquely designed to eliminate operator fatigue, improve control and enhance productivity in demanding soldering applications. The TD-100 uses a patented Tip-Heater Cartridge that is the best performing and lowest priced Tip-Heater Cartridge on the market today! Almost 100 soldering tip geometries are available as well as over 30 surface mount removal tips. **See Pages 18-21** for tip selection.

Shown with optional comfort grip 6993-0241-P1



### MT-100 MINITWEEZ™

The only high capacity, micro tweezer (**MT-100 MiniTweez™**) on the market today features soft comfort grips, the smallest stroke available, and its tweezing action mimics the natural motion of the human hand to eliminate hand fatigue. With 10 styles of component removal tips available, the MT-100 is one of the most versatile component removal tweezers and our tips cost less than half of our competitors! **See Page 22** for tip selection.



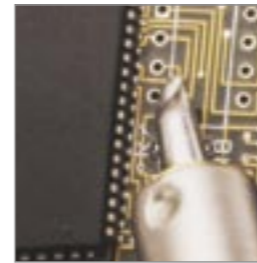
### THERMOPIK® 100

The newest tool for SMT component removal the **ThermoPik® 100**. The TP-100 is designed to reflow and remove QFPs in seconds. The integrated vacuum pik lifts the component from the PCB upon reflow. Based on our unique MT-100 handpiece, there isn't another SMT removal tool that is more comfortable in your hand. Over 10 styles of tips are available. **See Page 22** for tip selection.



## INTELLIHEAT COMPATIBLE HANDPIECES

VERSATILITY, PERFORMANCE AND VALUE SENSATEMP HANDPIECES



### PS-90 UNIVERSAL SOLDERING IRON

The Universal Soldering Iron (**PS-90**) is ideal for most soldering applications and SMT rework operations where high thermal capacity and flexibility are required. The PS-90 features a rugged plug in heater with gold contacts. There are 15 single point soldering tips and over 10 surface mount removal tips available for the PS-90. **See Pages 23-24** for tip selection



### SX-90 SODR-X-TRACTOR®

The best performing, in-line, vacuum desoldering tool (**SX-90 Sodr-X-Tractor®**) is ideal for Thru-Hole desoldering when fitted with SX-90 Desoldering tips and for SMT land clean-up when fitted with SX-90 Flo-D-Sodr® tips. SX-90 Desoldering tips are the longest lasting, best performing desoldering tips on the market! The SX-90 features a unique solder collection system that can utilize disposable Flux/Solder traps or a reusable glass collection chamber. An operator replaceable plug-in heater cartridge that can be changed in seconds is standard. There is a wide range of standard and precision SX-90 Desoldering tips for when access is tight! **See Page 25** for tip selection.



### TT-65 THERMOTWEEZ®

The most versatile and only patented SMT removal tool (**TT-65 ThermoTweez®**) provides safe, one-handed, rapid reflow and component removal of PLCCs and other 4 or 2 sided SMT components. Unlike other methods, its high thermal capacity and targeted heat delivery remove even the largest SMDs in just seconds without damaging the PCB or risking of adjacent component reflow; even on heavy assemblies. The patented vertically oriented handpiece and a wide variety of quick-change, slim-line tips easily reach into the tightest spaces for fast, safe component removal. The TT-65 also features a patented "stroke" adjustment to reduce hand fatigue for repetitive operations. **See Page 26** for tip selection.



### TJ-85 THERMOJET®

When the precise application of hot air is required, our slim line air pencil (**TJ-85 ThermoJet®**) is ideal for delivering heat for the installation and removal of chip components, SOTs, and SOICs. Multiple quick-change nozzle sizes are available. The handpiece's slim line, pencil grip design maximizes operator comfort and control. The TJ-85's airflow is actuated with a foot pedal. Ideal for the precise application of hot air for large SMDs down to 0201s. **See Page 26** for nozzle selection.





# HANDPIECE & POWER SOURCE CHARTS

CHOOSE THE RIGHT INTELLIHEAT HANDPIECE FOR YOUR APPLICATION

# ST SYSTEMS

PRODUCTION SOLDERING STATIONS ST30, ST 50 & ST 70 POWER SUPPLIES

## HANDPIECES

Part Number includes handpiece and standard cubby \*Does not include Handpiece

HANDPIECE	DESCRIPTION	PART NUMBERS
TD-100 ThermoDrive Iron	The most responsive soldering iron available. Uses tip-heater cartridges.	6993-0263-P1
TD-100 N	A nitrogen compatible version of the TD-100. Requires 6993-0271-P1.	6993-0272-P1
TD-100 with Instant SetBack Cubby	A kit containing the TD-100 and Instant SetBack Cubby	6993-0281-P1
MT-100 MiniTweez	Tip-heater cartridge based tweezer for 2 sided SMD removal.	6993-0264-P1
TP-100 ThermoPik	QFP removal tool with integrated component vacuum pick to lift reflowed component.	6993-0280-P1
PS-90 Universal Soldering Iron	Our famous High Capacity Soldering Iron for the most demanding applications.	6993-0267-P1
PS-90 N	A nitrogen compatible version of the PS-90.	6993-0274-P1
SX-90 Sodr-X-Tractor	The latest innovation in desoldering. Features disposable or reuseable solder traps.	6993-0266-P1
TT-65 ThermoTweez	High capacity tweezer for large or small SMDs.	6993-0268-P1
TJ-85 ThermoJet	A foot-pedal activated precision air pencil for the installation or removal of SMDs.	6993-0270-P1
SX-90 Heat Sleeve	Maintains comfortable temperature in heavy use applications.	6993-0229-P1
Instant Setback Cubby for TD-100*	Reduces tip temperature when iron is not in use.	6019-0077-P1
Nitrogen Regulator Accessory	Controls the flow of nitrogen to tip.	6993-0271-P1
N <sub>2</sub> Manifold Kit	Connect up to 10 N <sub>2</sub> irons to a single N <sub>2</sub> source.	6993-0277-P1

## KITS & APPLICATIONS

KITS & APPLICATIONS	Tip Heater Cartridge Technology Handpieces				SensaTemp Technology Handpieces			
	TD-100	MT-100	TP-100	PS-90	SX-90	TT-65	TJ-85	
Handpiece Kits (includes handpiece and tool stand)	6993-0263-P1 6993-0281-P1	6993-0264-P1	6993-0280-P1	6993-0267-P1	6993-0266-P1	6993-0268-P1	6993-0270-P1	
Handpiece Only Part Number	6010-0147-P1	6010-0148-P1	6010-0158-P1	6010-0150-P1	6010-0149-P1	6010-0151-P1	6010-0153-P1	
High Cycle Soldering	✓			✓				
Standard Soldering	✓			✓				
High Mass Soldering				✓				
Micro Soldering	✓							
Chip Installation	✓	✓		✓		✓	✓	
Solder Wicking	✓			✓			✓	
Thru-Hole Desoldering					✓			
SMT Land Preparation	✓			✓	✓		✓	
Solder Removal from Lands					✓			
Large SMD Removal			✓			✓		
Standard SMD Removal	✓	✓	✓	✓		✓		
Micro SMD Removal	✓	✓		✓		✓	✓	
Large Component Installations*	✓			✓			✓	
Standard Component Installations*	✓			✓			✓	
Micro Component Installations*	✓			✓			✓	

## INTELLIHEAT POWER SOURCE & HANDPIECE COMPATIBILITY

\*with Solder Paste

TIP-HEATER CARTRIDGE HANDPIECES	Power Source Options - ST and MBT Systems ✓ = Optional Handpiece ★ = Standard handpiece packaged with System								
	ST 30	ST 50	ST 65	ST 70	ST 75	ST 100	ST 115	MBT 301	MBT 350
• TD-100	★	★	✓	★	✓	★	✓	★	★
• MT-100	✓	✓	✓	✓	✓	✓	✓	✓	★
• TP-100			✓		✓		✓	✓	✓
SENSATEMP HANDPIECES	ST 30	ST 50	ST 65	ST 70	ST 75	ST 100	ST 115	MBT 301	MBT 350
• PS-90	✓	★	✓	✓	✓	✓	✓	✓	✓
• SX-90			★		★		★	★	★
• TT-65	✓	✓	✓	✓	✓	✓	✓	✓	✓
• TJ-85					✓		✓	✓	✓

### FEATURES:



- IntelliHeat Control Technology
- °C/°F Temperature Scales
- Temperature Adjustment Lockout
- ESD grounding jack
- ESD Safe metal housing
- Stackable
- Can be mounted under workbench or shelf with optional bracket 1321-0609-P1

The **ST 30** is a single channel system with dial control featuring IntelliHeat. The system is packaged with the TD-100 ThermoDrive Soldering Iron or can be purchased as a Power Source only and combined with any of 4 optional handpieces. The ST 30 improves quality, reduces costs and eliminates the maintenance and calibration hassles associated with other systems. The heavy-duty metal housing makes this system the ideal choice for the harshest environments and the sloped face of the front panel is a standard feature for ease of use. An optional mounting bracket (P/N 1321-0609-P1) is available to mount the system under a work-bench or shelf, preserving precious bench top space. The optional Instant-SetBack Cubby is available for the TD-100 ThermoDrive Soldering Iron to extend tip life, especially beneficial when Lead Free solders are used.

### FEATURES:



- IntelliHeat Control Technology
- Digital Display & Keypad
- °C/°F display options
- Password lockout
- Temperature SetBack
- Auto-Off
- Definable operating temperature range
- ESD grounding jack
- ESD Safe metal housing
- Stackable
- Can be mounted under workbench or shelf with optional bracket 1321-0609-P1

The **ST 50** is a single channel, digital power supply that is available with the TD-100 ThermoDrive Soldering Iron or PS-90 SensaTemp Soldering Iron. The ST 50 can also be purchased as a Power Source only and combined with any of 4 optional handpieces. The programmable features of the ST 50 cannot be found anywhere on similarly priced systems! The ST 50 improves quality, reduces costs and eliminates the maintenance and calibration hassles associated with other systems. The ST 50 features IntelliHeat Control Technology. The heavy-duty, durable metal housing ensures years of service and the sloped face of the front panel is a standard feature for ease of use. An optional mounting bracket (P/N 1321-0609-P1) is available to mount the system under a work-bench or shelf, preserving precious bench top space. The optional Instant-SetBack Cubby is available for the TD-100 ThermoDrive Soldering Iron to extend tip life, especially beneficial when Lead Free solders are used.

### FEATURES:



- IntelliHeat Control Technology
- Performance level lockout (if Power Module is removed the system is shut down.)
- ESD grounding jack
- ESD Safe metal housing
- Stackable
- Can be mounted under workbench or shelf with optional bracket 1321-0609-P1
- Supplied with 6.5, 7 and 7.5 Power Modules

The **ST 70** is a single channel system that is controlled by POWER MODULES™ and comes with the ThermoDrive Soldering Iron (TD-100). The system can also be purchased as a Power Source only and combined with any of 4 optional IntelliHeat handpieces. The ST 70 is the easiest to operate. Simply select the performance level you desire, plug in the appropriate Power Module and the system takes care of the rest! The ST 70 improves quality, reduces costs while protecting your process. The heavy-duty metal housing makes this system the ideal choice for the harshest environments and the sloped face of the front panel is a standard feature for ease of use. An optional mounting bracket (P/N 1321-0609-P1) is available to mount the system under a work-bench or shelf, preserving precious bench top space. The optional Instant-SetBack Cubby is available for the TD-100 ThermoDrive Soldering Iron to extend tip life, especially beneficial when Lead Free solders are used.



POWER MODULE	PART NUMBER	COLOR
Heat Level 5	1207-0446-01-P1	Green
Heat Level 5.5	1207-0446-02-P1	Blue
Heat Level 6	1207-0446-03-P1	Orange
Heat Level 6.5	1207-0446-04-P1	Gold
Heat Level 7	1207-0446-05-P1	Red
Heat Level 7.5	1207-0446-06-P1	Purple
Heat Level 8	1207-0446-07-P1	Black
Heat Level 8.5	1207-0446-08-P1	Silver